



Onboarding Guide



1.

Sign up flow

- The first step of creating your CTV channel with Castify, is to sign up here: castify.ai/sign-up
- You will be asked to provide your contact information and your Youtube channel URL, so we could automatically pull your content
- Select the platforms you'd like your content to be distributed to, and submit your registration
- After reviewing your request, your dedicated success manager will contact you



maximize your reach and revenue on multiple platforms with zero effort

Please note, at this stage we accept channels with minimum of 500K monthly views. Let's get you started!

Name

YouTube channel URL

Address

Word

Distribution Platform:



I am the owner of this YouTube channel and hold all legal rights to distribute its content on additional platforms

By creating your account you agree to our [Privacy Policy](#) and [Terms of Service](#).

SIGN UP

2.

Setting up your account

In order to create your channels, we will need you to provide us with graphic assets [See specifications per platform]. Please send the following to channels@castify.ai Email title: “[your channel name], Castify account setup”
General creatives for all platforms are:

2.1.

1920x1080 Splash screen image JPG/PNG
336x210 Default thumbnail
246x140 App logo (App's home screen)

2.3.

Your logo in a PNG and SVG format,
Transparent background

2.4.

Your Brand Book / Guidelines
(If you have one)

3.

Setting up your account

Creatives per platform, specifications:

3.1.



1920x1080 Splash screen image JPG/PNG
 1920x1080 Background image JPG/PNG
 492X280 Logo transparent PNG files
 1080x810 Logo transparent PNG files
 400x400 Logo PNG/JPG



App icon is built with 3 layers, click [here](#) for more info
 400X240 App icon 3 layers, 800X480 App icon 3 layers

1280X768 App page, store header, JPG/PNG
 3840X1440 Top shelf image, JPG/PNG
 4640X1440 Top shelf image - wide, JPG/PNG

Roku

246x140 App logo (app's homescreen)
 336x210 Default thumbnail
 540x405 App logo (outside the app)
 1920x1080 Splash screen
 1920x1080 BackGround image

androidtv

512x512 PNG Hi-res icon
 1024x500 Feature Graphic
 180x120 Promo Graphic
 1280x720 TV Banner
 1920x1080 Splash Screen

amazon fireTV

Three-dimensional Icon:
 48 × 48 (mdpi)
 72 × 72 (hdpi)
 96 × 96 (xhdpi)
 144 × 144 (xxhdpi)
 192 × 192 (xxxhdpi)
 512 × 512 (Google Play store)
 icon 114x114
 320 x 180 (Android TV app icon)

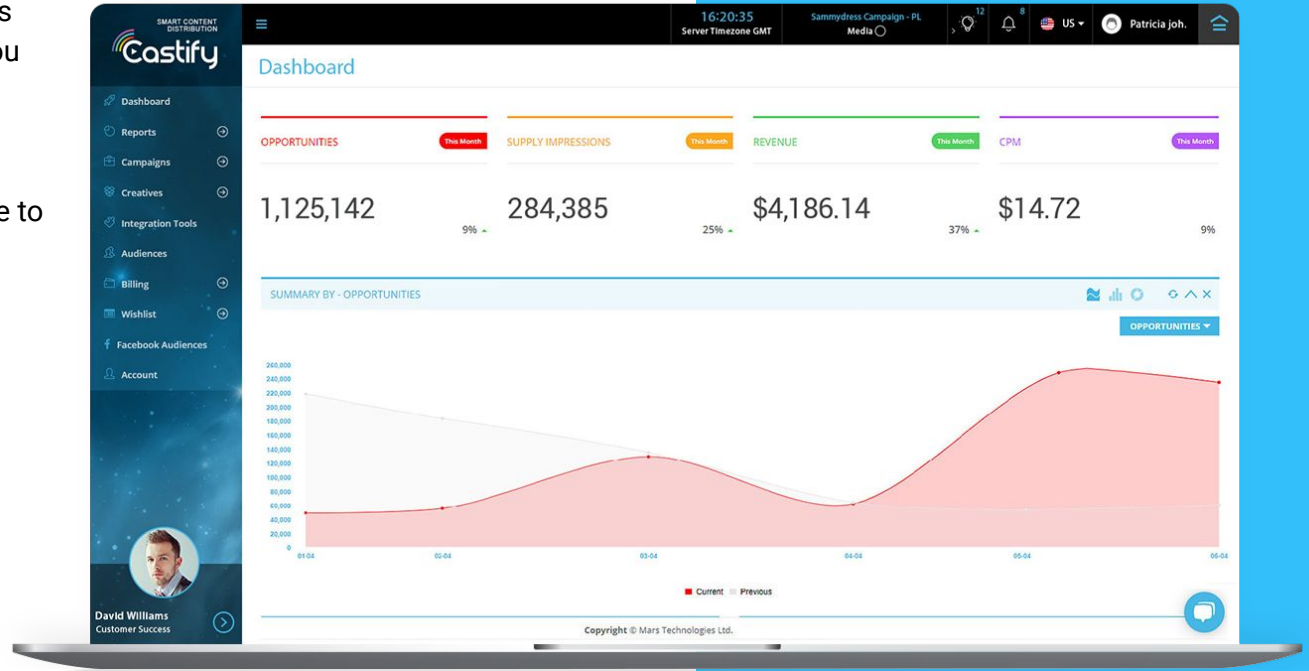
Splash Screen JPG/PNG:
 640 x 260
 1024 x 500
 1280 x 720
 1920x1080

3.2. A description of the channel/talent - max 300 characters (note that this is not mandatory for demo purposes)

Dashboard

Once your account and channels have been created, we'll send you an email with your dashboard's credentials.

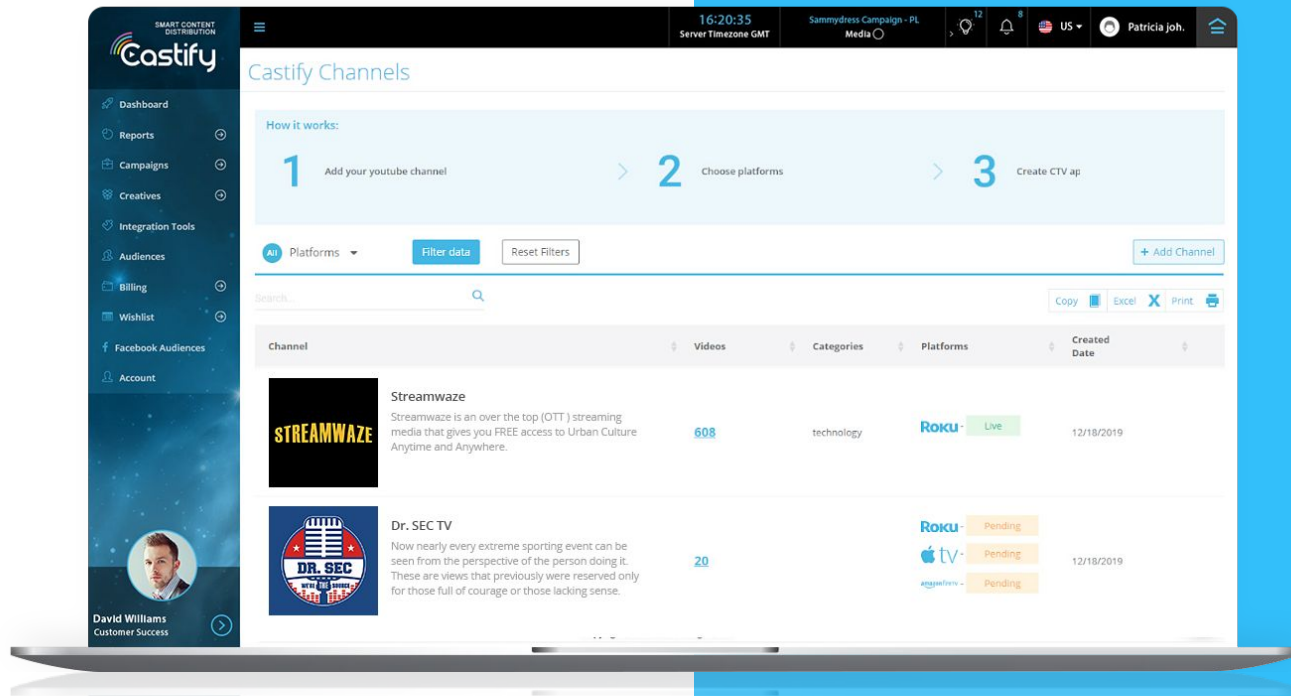
On your dashboard you'll be able to see statistics for your channel:



5.

Dashboard

Castify Channels screen to manage distribution settings



6.

Monetizing your channel

- 5.1 We generate revenue by using various methods - ads, subscription and E-commerce. You'll be able to see your earnings on the dashboard and pull your funds via Paypal, WireTransfer and all other major transaction tools.

- 5.2 We need volumes to start monetizing the channel...
Please note that the earnings generated from your channel is in direct correlation to your traffic volume and quality, your follower base and amount of views. The minimal volume for monetization is 1,000 view/day.

- 6. Service - Castify will assign a Dedicated CSM for your account. Your success manager will make sure everything is set up correctly and get everything started. We will also monitor your channel's activity and earnings and make sure it is optimized for maximum results.

- 7. Content - Please provide us with the relevant URL to your content feed or to your Youtube channel

Our smart engine can automatically import your video content from your Youtube channel, or from any other feed (e.g json, mrss).



channels@castify.ai

**THANK
YOU!**